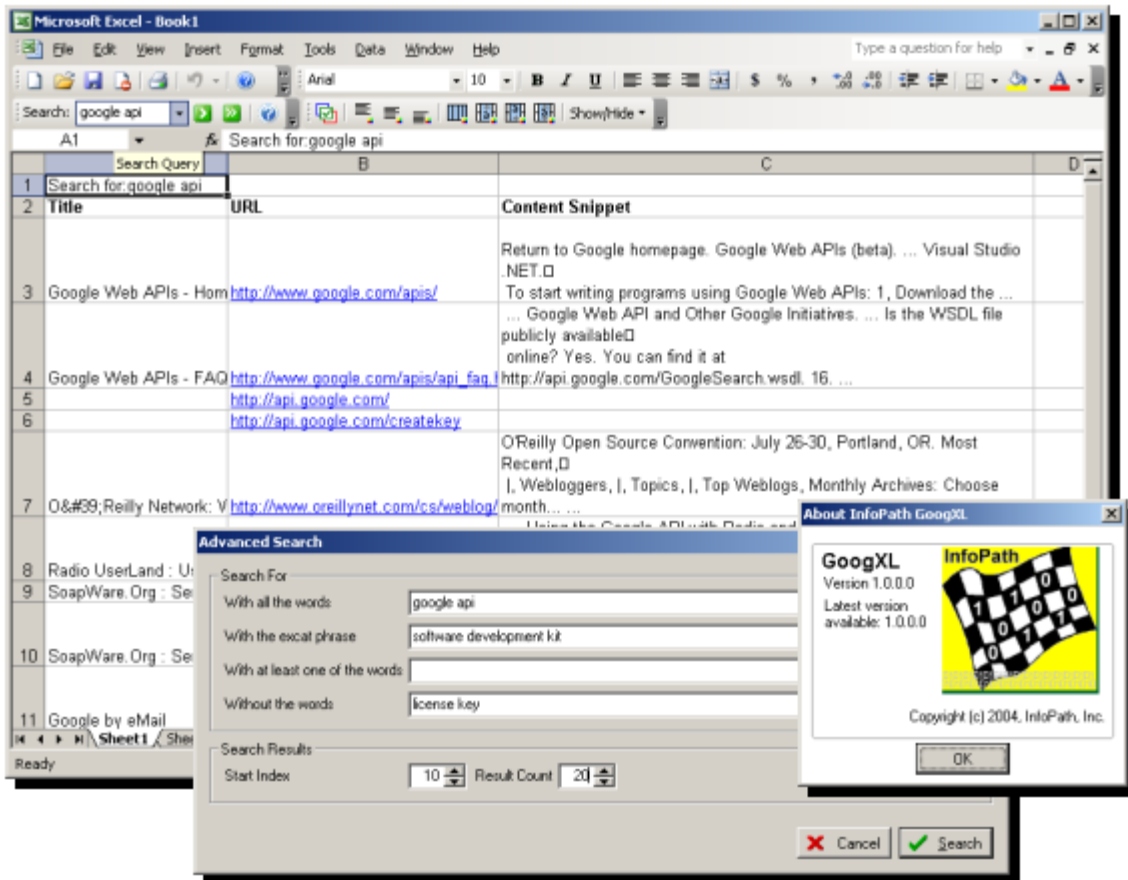


# GoogXL



## Installation and User Guide

© 2004, InfoPath, Inc.

InfoPath GoogXL  
Version 1.0.0.0

# GoogXL

© 2004, InfoPath, Inc.

All rights reserved. No parts of this work may be reproduced in any form or by any means - graphic, electronic, or mechanical, including photocopying, recording, taping, or information storage and retrieval systems - without the written permission of the publisher.

Products that are referred to in this document may be either trademarks and/or registered trademarks of the respective owners. The publisher and the author make no claim to these trademarks.

While every precaution has been taken in the preparation of this document, the publisher and the author assume no responsibility for errors or omissions, or for damages resulting from the use of information contained in this document or from the use of programs and source code that may accompany it. In no event shall the publisher and the author be liable for any loss of profit or any other commercial damage caused or alleged to have been caused directly or indirectly by this document.

Printed: February 2004 in Portland, OR

**Publisher**

*InfoPath, Inc.*

**Managing Editor**

*Ron Levy*

**Technical Editor**

*Elena Belder*

**Special thanks to:**

*All the people who contributed to this document.*

# Table of Contents

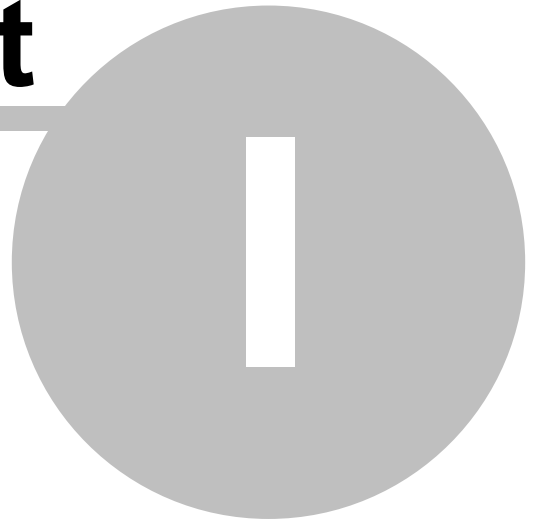
Foreword	0
<b>Part I Introduction</b>	<b>3</b>
1 Welcome .....	3
2 Target Audience .....	3
3 System Requirements .....	3
<b>Part II Product Installation</b>	<b>5</b>
1 Using the Setup Program .....	5
<b>Part III Searching with GoogXL</b>	<b>7</b>
1 The GoogXL Toolbar .....	7
2 Entering the Google license key .....	7
3 Basic Search .....	8
4 Advanced Search .....	8
<b>Index</b>	<b>10</b>

# InfoPath GoogXL

Installation and User Guide

# Part

---



# 1 Introduction

## 1.1 Welcome

Welcome to InfoPath GoogXL - a Microsoft Excel™ add-in that provides Internet Searching using the Google API.

Results of searches performed with GoogXL are stored in the Excel worksheet you work with and can be used for research purposes. GoogXL provides simple search bringing up to 10 results or advanced search where you can define the start index and number of results returned.

Google does not allow automated search against their database, unless you are using the Google API (currently in Beta). The Google API requires a Google license key and is limited to 1,000 searches per day.

## 1.2 Target Audience

This book contains the information required to get started and use the GoogXL Add-In.

Systems Administrators will learn how to install GoogXL and power users will learn how to take advantage of Google Searches within Excel with it.

## 1.3 System Requirements

To use GoogXL the following are required:

- Microsoft Excel™ 2000, XP or 2003
- Google API license key. Get your license key at the [Google API home page](#)
- The Google API is a free beta service, not intended for commercial use. Please read and accept the [Terms and Conditions for Google Web API Service](#) before using GoogXL.

# InfoPath GoogXL

Installation and User Guide

# Part

---



## 2 Product Installation

### 2.1 Using the Setup Program

The GoogXL Setup program is straightforward - it copies the Add-In code and documentation to a directory of your choice and registers the Add-In with the system.

If you decide to move the GoogXL.dll code file to a different location, or want to install it on a different machine, you will need to register it with the system using the standard Windows "regsvr32" tool using the following syntax from the command line:

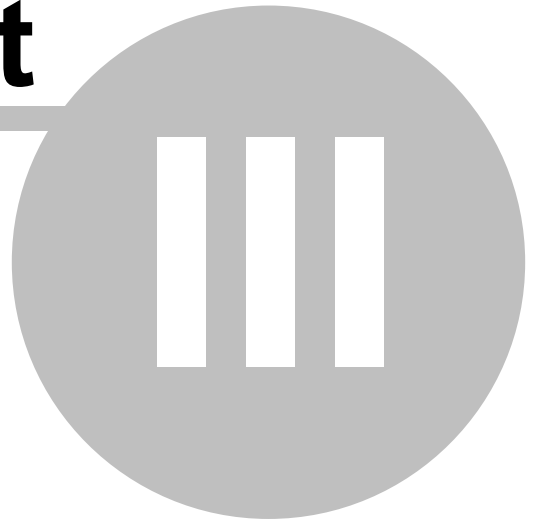
```
regsvr32 GoogXL.dll
```

# InfoPath GoogXL

Installation and User Guide

# Part

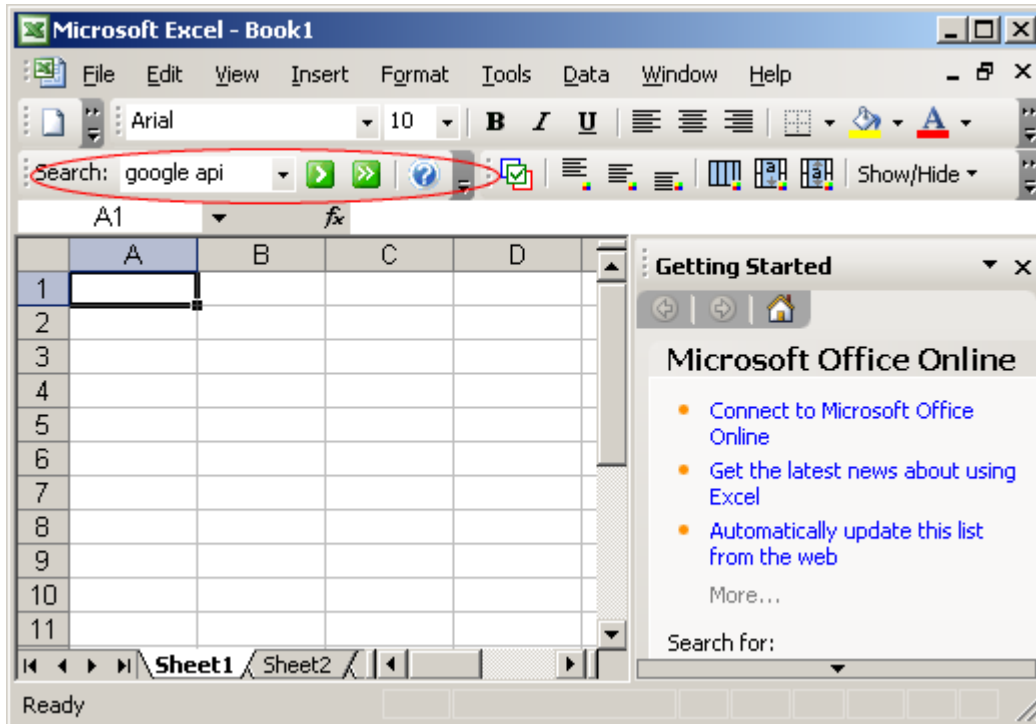
---



## 3 Searching with GoogXL

### 3.1 The GoogXL Toolbar

The GoogXL Add-In adds a new Search toolbar to your Excel installation.

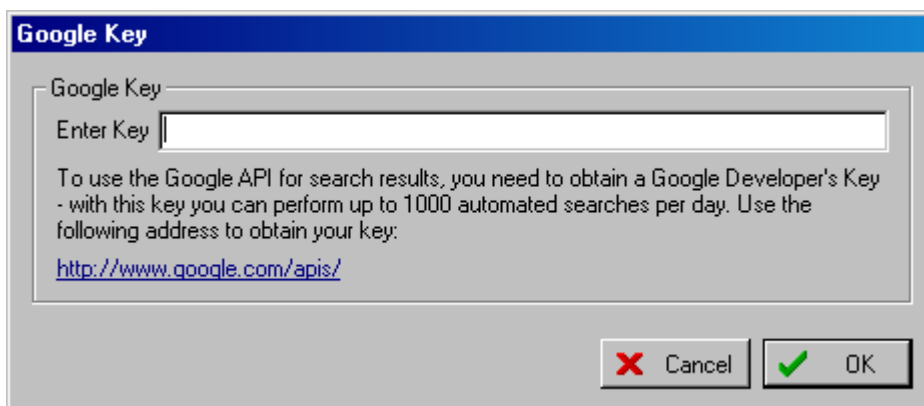


The toolbar contains the following controls, from left to right:

- Search box - Enter a search item, press the Enter key to perform a basic search
- Search button - Perform a basic search based on the entry in the Search box
- Advanced Search button - Open the advanced search dialog
- Help - Display the Add-In information and look for available updates

### 3.2 Entering the Google license key

First time you try to search using the GoogXL Add-In you are prompted to enter the Google license key.

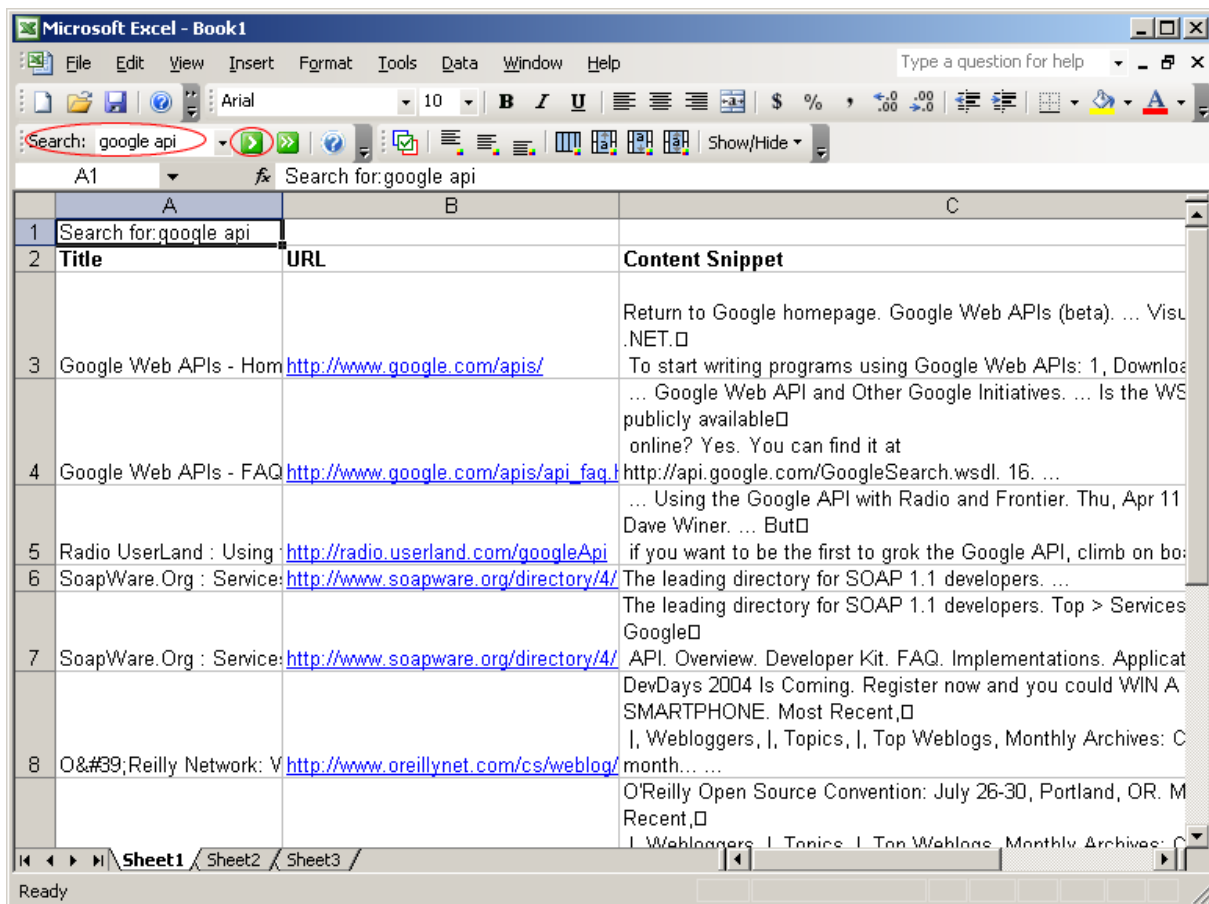


Obtain your key from the Google API web site and enter it in the dialog. Press the OK button when ready. The key will be stored in the registry for future use.

### 3.3 Basic Search

Basic search brings the first 10 results returned by Google for the search query entered in the Search box. The search results are inserted into the active sheet starting from the active cell and going down and to the right from there.

You can activate Basic search by entering a new search query and pressing the Enter key in the search box. If you want to rerun the latest search use the Basic search button (immediately to the right of the Search box).



### 3.4 Advanced Search

The Advanced Search dialog offers help in constructing your search query.

You can define search words, exact phrases, words to dismiss and words with a logical OR between them.

It also allows you to define the starting search index and the number of results to return. Basic search always starts at the first index (0) and brings 10 results - with Advanced Search you can bring more results, or bring results that Google thinks are lower in their applicability to your search.

**Advanced Search**

Search For

With all the words

With the exact phrase

With at least one of the words

Without the words

Search Results

Start Index  Result Count

# Index

## - A -

Advanced Search 8

## - B -

Basic Search 8

## - L -

License Key 7

## - S -

Setup 5

System Requirements 3

## - T -

Target Audience 3

Toolbar 7

## - W -

Welcome 3